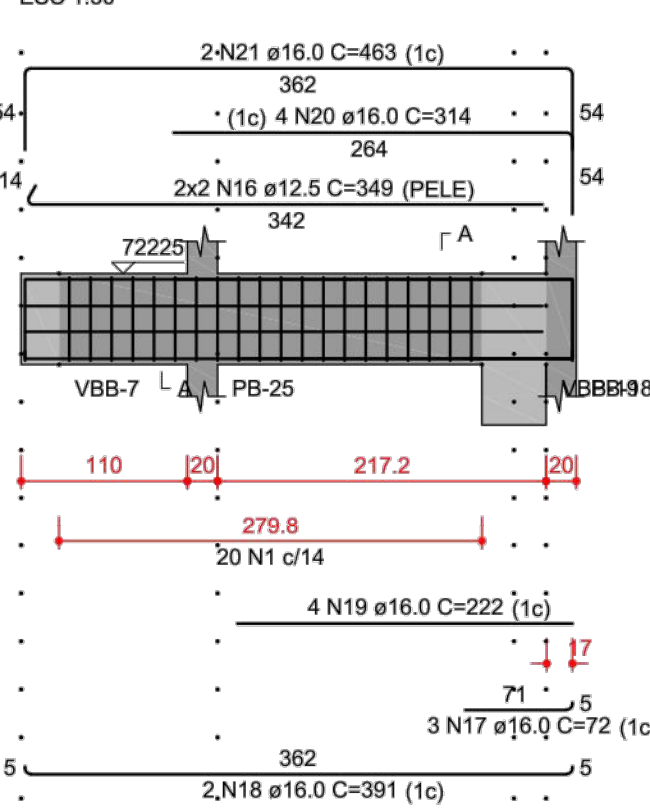
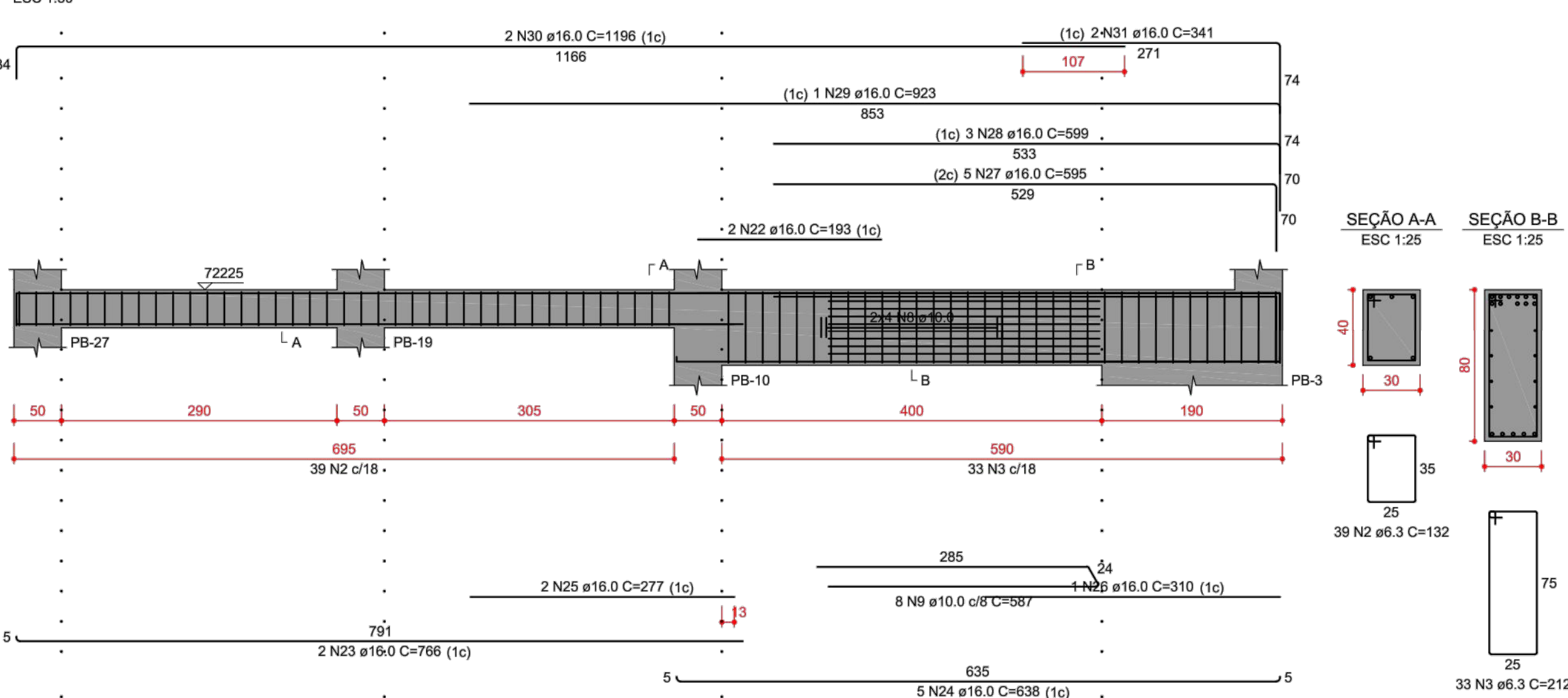


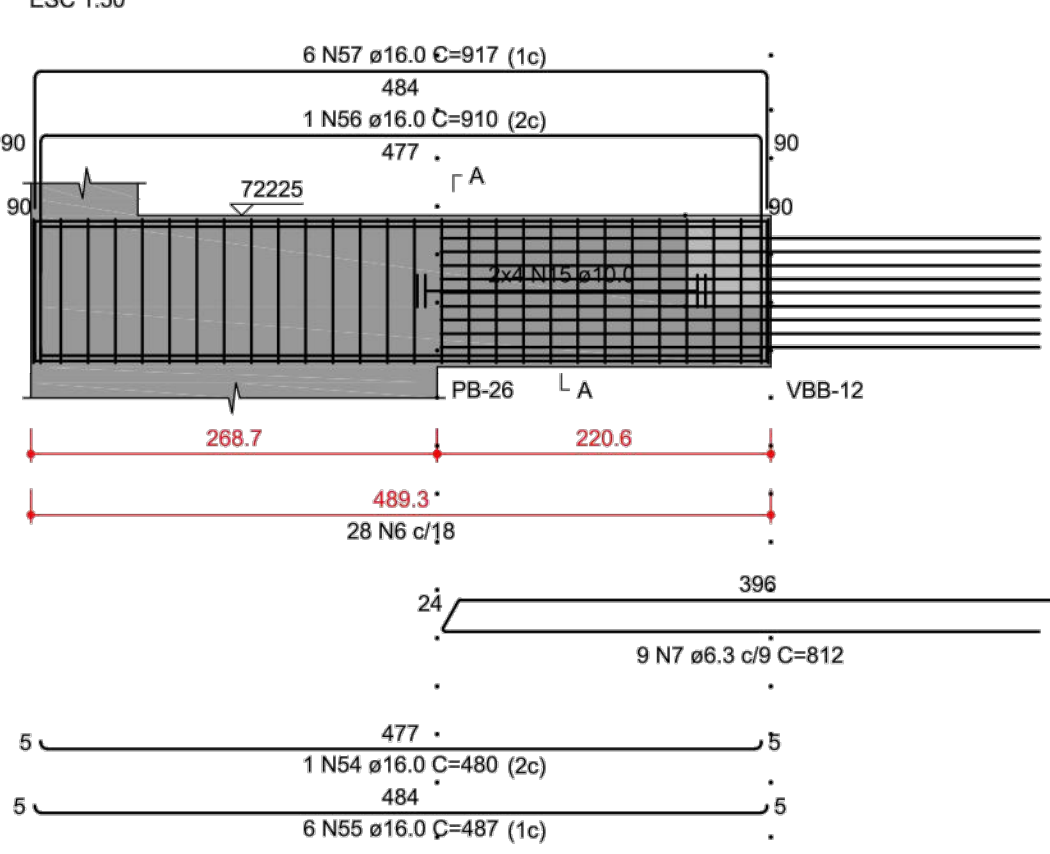
VBB-12 (40 x 60)



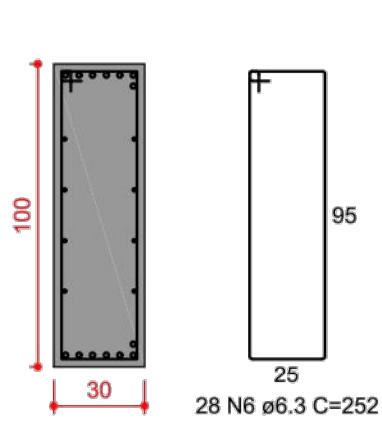
VBB-13 (var)



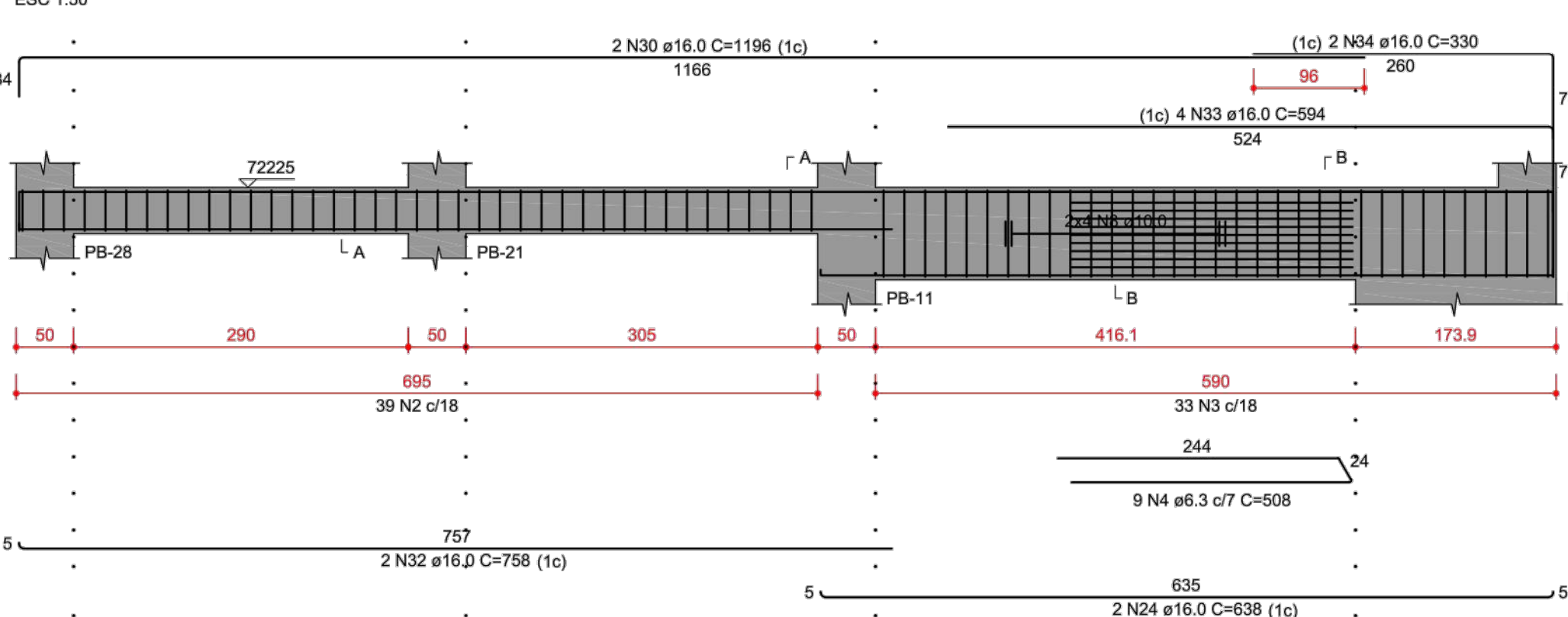
VBB-19 (30 x 100)



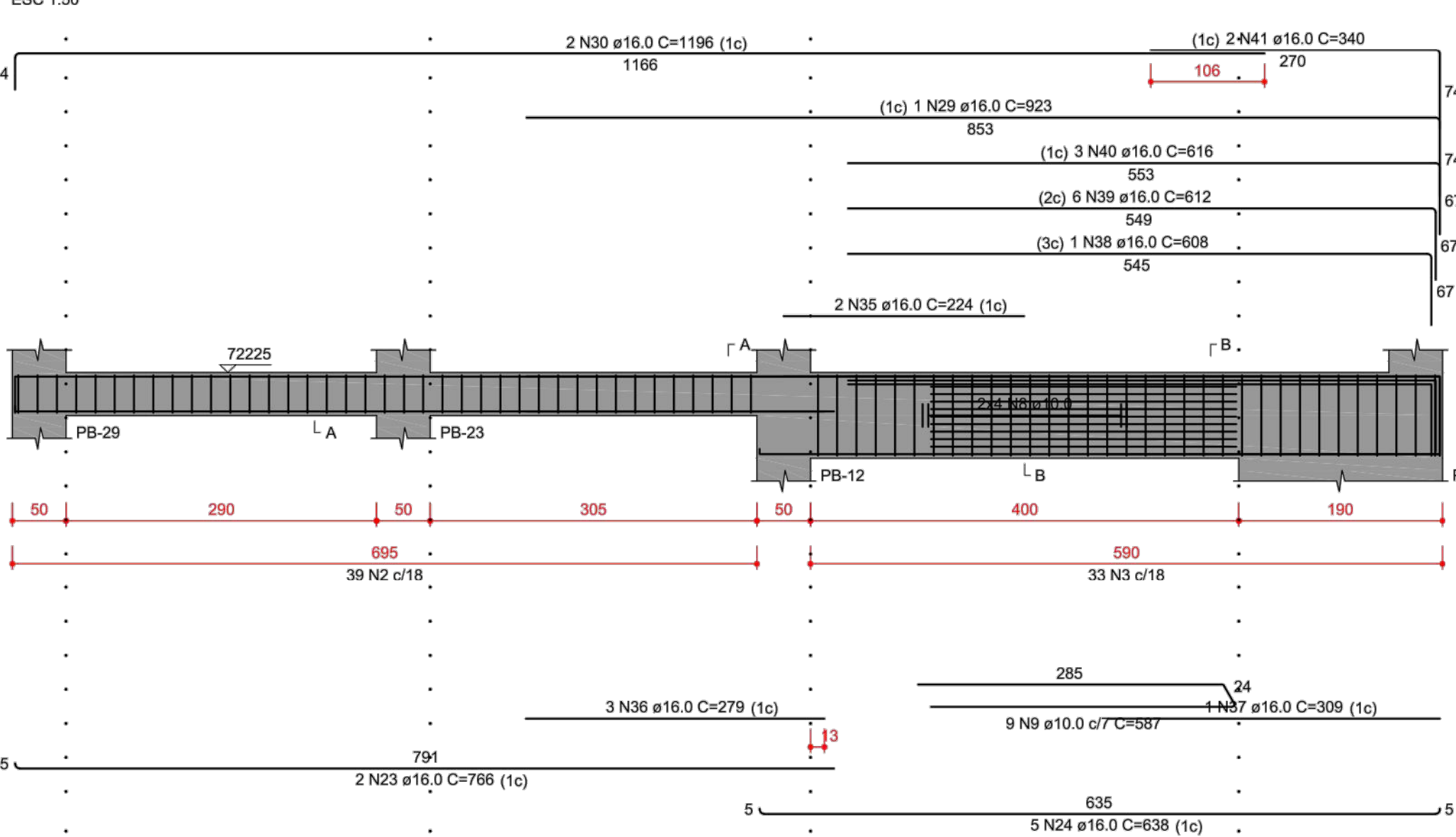
SEÇÃO A-A



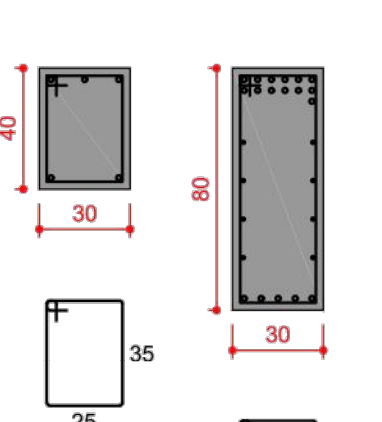
VBB-14 (var)



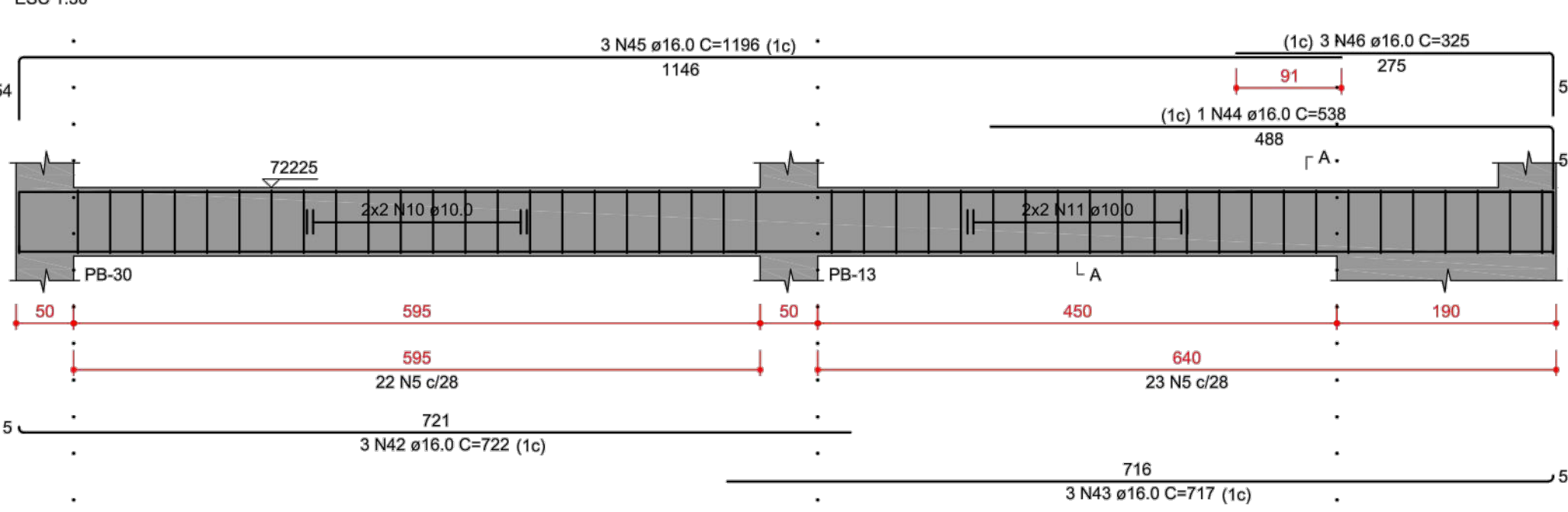
VBB-15 (var)



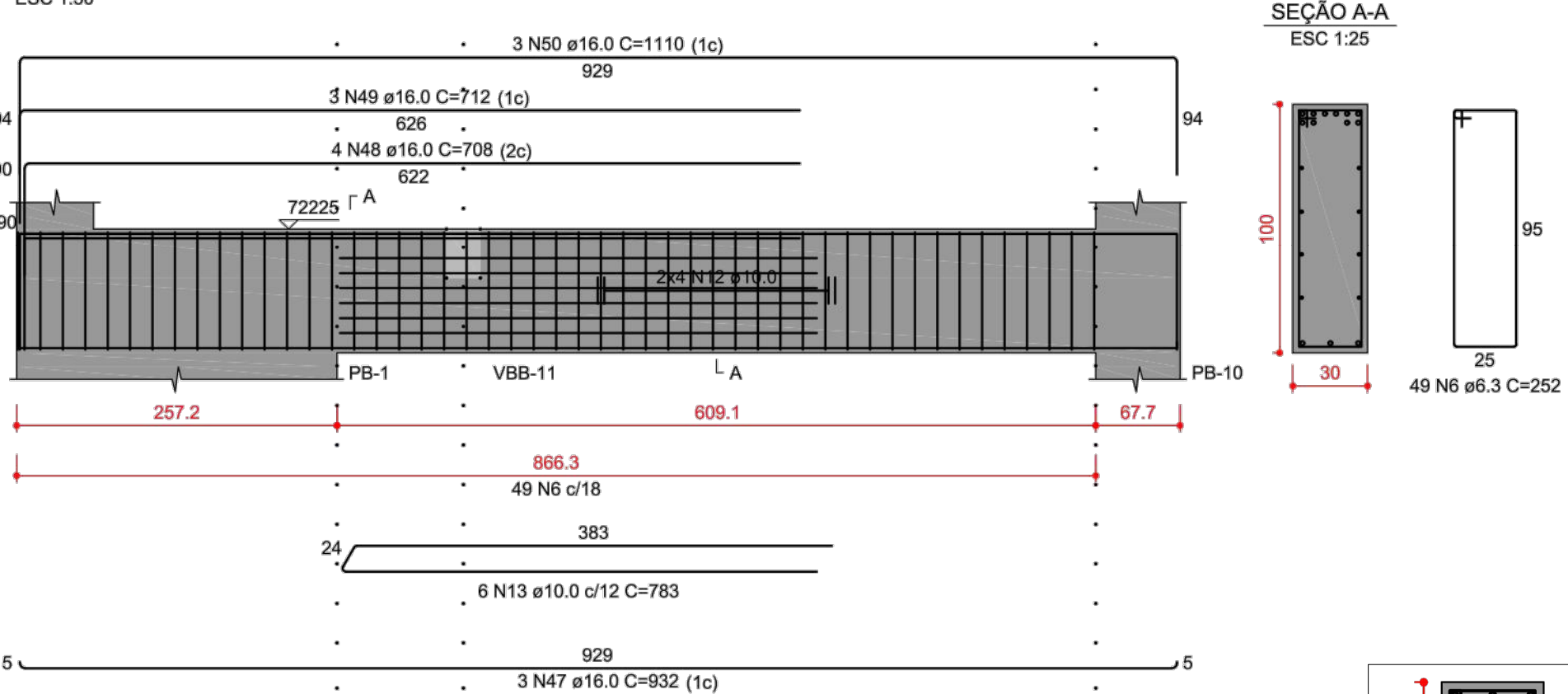
SEÇÃO A-A



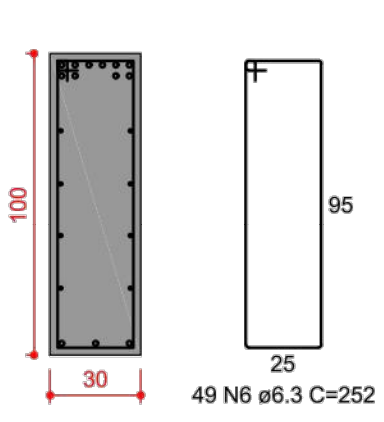
VBB-16 (20 x 60)



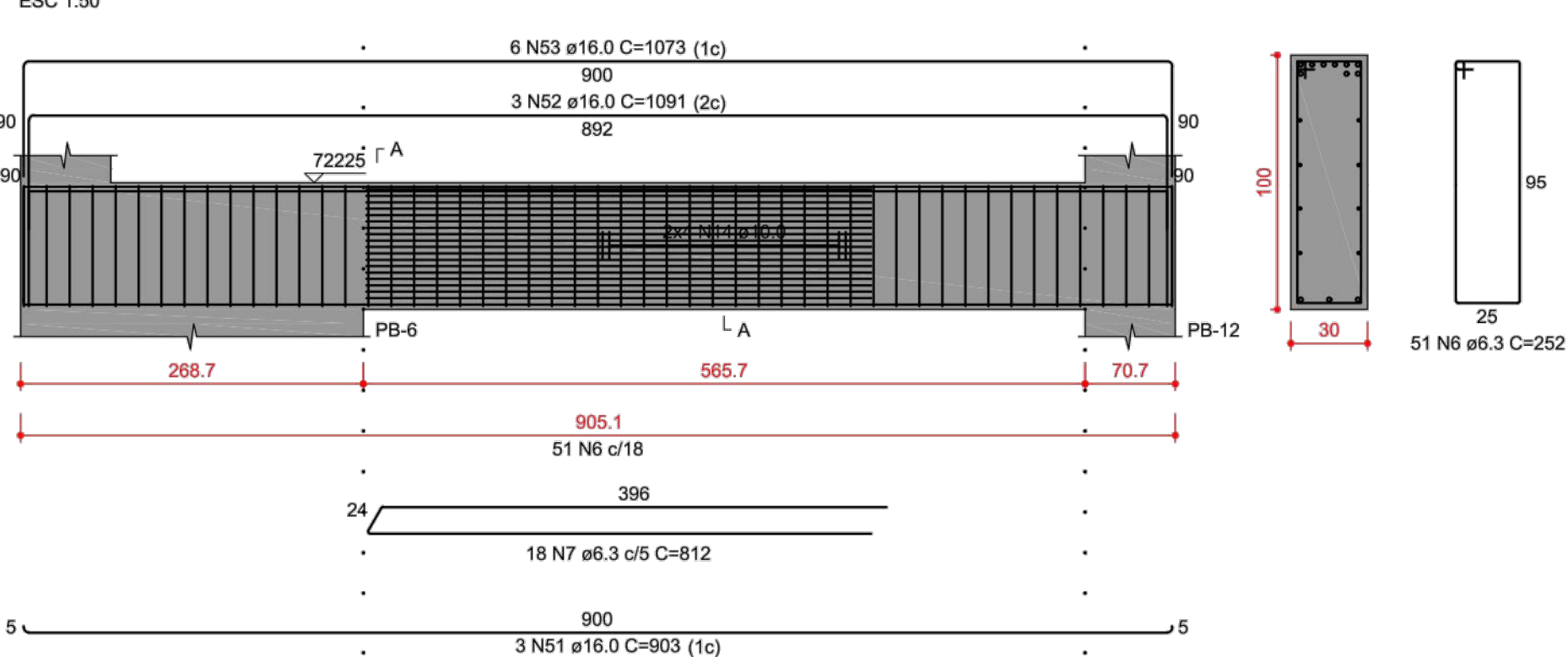
VBB-17 (30 x 100)



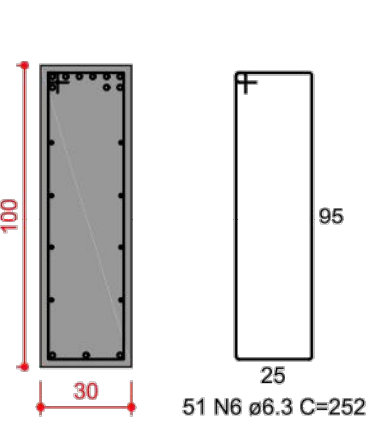
SEÇÃO A-A



VBB-18 (30 x 100)



SEÇÃO A-A



AÇO	N	DIAM (mm)	QUANT	C.UNIT (cm)	C.TOTAL (cm)
CA50	1	6.3	20	192	3840
	2	6.3	117	132	15444
	3	6.3	99	212	20988
	4	6.3	9	508	4572
	5	6.3	45	152	6840
	6	6.3	128	252	32256
	7	6.3	27	812	21924
	8	10.0	24	corr	15240
	9	10.0	17	587	9979
	10	10.0	4	corr	2760
	11	10.0	4	corr	2740
	12	10.0	8	corr	7432
	13	10.0	6	783	4698
	14	10.0	8	corr	7200
	15	10.0	8	corr	3872
	16	12.5	4	349	1396
	17	16.0	3	72	216
	18	16.0	2	391	782
	19	16.0	4	222	888
	20	16.0	4	314	1256
	21	16.0	2	463	926
	22	16.0	2	193	386
	23	16.0	4	766	3064
	24	16.0	12	638	7916
	25	16.0	2	277	554
	26	16.0	1	310	310
	27	16.0	5	595	2975
	28	16.0	3	599	1797
	29	16.0	2	923	1846
	30	16.0	6	1196	7176
	31	16.0	2	341	682
	32	16.0	2	738	1516
	33	16.0	4	594	2376
	34	16.0	2	330	660
	35	16.0	2	224	448
	36	16.0	3	279	837
	37	16.0	1	309	309
	38	16.0	1	608	608
	39	16.0	6	612	3672
	40	16.0	3	616	1848
	41	16.0	2	340	680
	42	16.0	3	722	2166
	43	16.0	3	717	2151
	44	16.0	1	538	538
	45	16.0	3	1196	3588
	46	16.0	3	325	975
	47	16.0	3	932	2796
	48	16.0	4	708	2832
	49	16.0	3	712	2136
	50	16.0	3	1110	3330
	51	16.0	3	903	2709
	52	16.0	3	1091	3195
	53	16.0	6	1073	6438
	54	16.0	1	480	480
	55	16.0	6	487	2922
	56	16.0	1	910	910
	57	16.0	6	917	3942

AÇO	DIAM (mm)	C.TOTAL (m)	PESO + 10% (kg)
CA50	6.3	1058.6	285
	10.0	539.2	391.7
	12.5	14	14.8
	16.0	842.6	1463
PESO TOTAL (kg)			
CA50		2128.4	

Volume de concreto (C-30) = 16.49 m³
Área de forma = 136.93 m²

PRÉDIO BOULEVARD
ARMAÇÃO DE VIGAS DO PAVIMENTO
BASE



MUNICÍPIO DE CARAPICUÍBA
SECRETARIA DE DESENVOLVIMENTO URBANO
SETOR DE PROJETOS

FOLHA:
018

OBRA: Construção de Passarela de Interligação dos Terminais Rodoviários Metropolitanos e Municipal com a Estação CPTM e Av. Francisco Pignatari

LOCAL: Av. Governador Mário Covas e Av. Francisco Pignatari

RECURSO/CONVÊNIO: XXXXXXXXXXXXXXXXXXXX ART/RRT: 28027230172709526

TABELA DE ÁREAS

Total de áreas	
Área total	XX m2
Área de intervenção	1.074,8 m2

DIORGENS GODÓI DA SILVA
ENGENHEIRO CIVIL
CREA-SP nº 5069838630

DATA: 18/02/2022 ESCALA: 1:200

DESENHO ELABORADO POR DIORGENS GODÓI DA SILVA
ENGENHEIRO CIVIL
CREA-SP nº 5069838630

REVISÃO NÚMERO: 2 MÊS: 02/2022